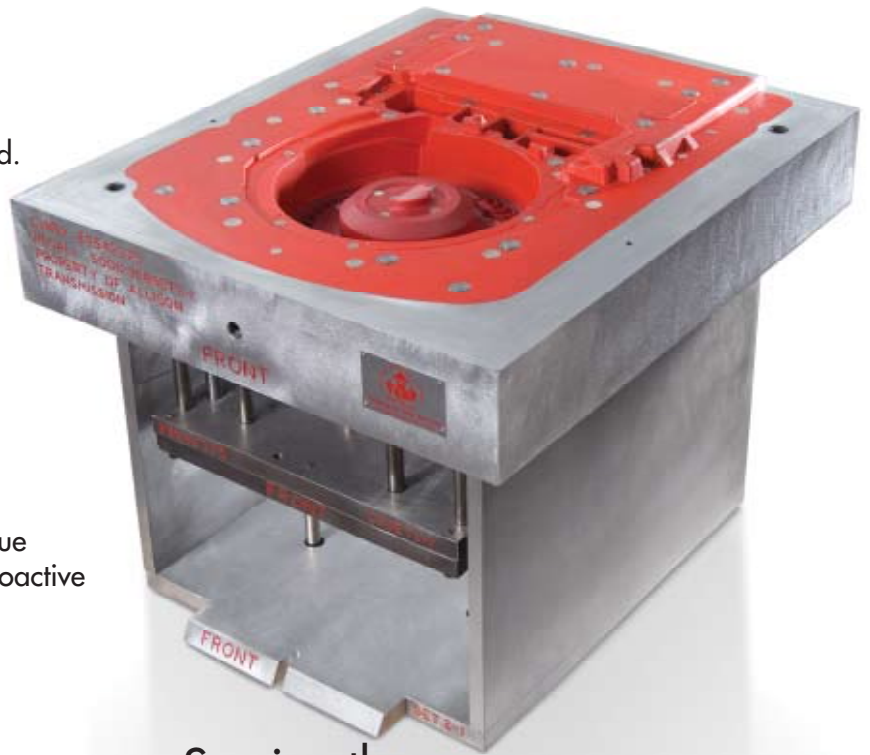


Permanent Molds & Semi-Permanent Molds

Winona Pattern & Mold Design Engineers combine the latest solid modeling software with extensive Permanent Mold experience, creating tooling assemblies for the molds we build. Molds are manufactured with the latest CNC tool-pathing software. Manufacturing methods include high-speed CNC machining and EDM. CMM are used to validate and ensure dimensional accuracy.

It is our commitment to design and manufacture quality permanent mold tooling. Total project costs are reduced through concurrent engineering with value added engineering, concentrating on proactive product design and casting ideas.



Serving the
**Metal Casting
and Molding
Industries**

Capabilities:

- Turn Key Permanent Mold Design
- EDM Up to 60 x 40
- From Iron to Hardened H-13
- Full Engineering Services
- Gravity Permanent Mold
- Low Pressure Permanent Mold

Industries Served:

- Aerospace
- Agriculture
- Automotive
- Medical
- Military
- Recreational Vehicle



www.winonapattern.com

"Tooling for Your Success"

Winona Pattern & Mold

Corporate Headquarters

1025 E. King Street
Winona, MN 55987
T: 507-452-0228
F: 507-452-0641

Wisconsin Division

4145 Courtney Rd. Suite 2
Franksville, WI 53126
T: 262-835-2112
F: 262-835-2150